

DESCRIPTION: ABOVE AND BELOW P.C.B., DECK AND PUSH-ROD LOCATION ARE AS VIEWED BY USER.

PRODUCT NO. 92882-XXXX NOTE ⑥	PCB SIDE	PUSH ROD LOCATION	SOLDER TAIL ⑤	STAND-OFF HEIGHT DIM "L"	EJ. HEADER ASSY 92856-XXX ④	EJ. MECHANISM ASSY 94307-XXXX ③	DIMENSION S	MOUNTING STYLE TO PCB AND PUSH-ROD LOCATION
000CA	ABOVE	RIGHT	R/A	0.0	000	00CA	13.0	
000CH	ABOVE	RIGHT	R/A	0.0	000	00CH	13.0	
000DA	ABOVE	RIGHT	R/A	0.0	000	00DA	15.6	
001CA	ABOVE	RIGHT	SMT-STG	0.0	001	00CA	13.0	
002CA	ABOVE	RIGHT	SMT-IL	0.0	002	00CA		
020CA	ABOVE	RIGHT	R/A	2.0	040	02CA		
040CA	ABOVE	RIGHT	R/A	4.0	010	04CA		
050CA	ABOVE	RIGHT	R/A	5.0	020	05CA		
070CA	ABOVE	RIGHT	R/A	7.0	070	07CA		
100CA	ABOVE	LEFT	R/A	0.0	000	10CA		
101CA	ABOVE	LEFT	SMT-STG	0.0	001	10CA		
102CA	ABOVE	LEFT	SMT-IL	0.0	002	10CA		
120CA	ABOVE	LEFT	R/A	2.0	040	12CA		
140CA	ABOVE	LEFT	R/A	4.0	010	14CA		
150CA	ABOVE	LEFT	R/A	5.0	020	15CA		
170CA	ABOVE	LEFT	R/A	7.0	070	17CA		
500CA	BELOW	RIGHT	R/A	0.0	500	10CA		
501CA	BELOW	RIGHT	SMT-STG	0.0	501	10CA		
502CA	BELOW	RIGHT	SMT-IL	0.0	502	10CA		
520CA	BELOW	RIGHT	R/A	2.0	540	12CA		
540CA	BELOW	RIGHT	R/A	4.0	510	14CA		
550CA	BELOW	RIGHT	R/A	5.0	520	15CA		
600CA	BELOW	LEFT	R/A	0.0	500	00CA		
601CA	BELOW	LEFT	SMT-STG	0.0	501	00CA		
602CA	BELOW	LEFT	SMT-IL	0.0	502	00CA		
620CA	BELOW	LEFT	R/A	2.0	540	02CA		
640CA	BELOW	LEFT	R/A	4.0	510	04CA		
650CA	BELOW	LEFT	R/A	5.0	520	05CA		

NOTES:

1 MATERIAL:

1.1 HEADER ASSY:  
PLASTIC HOUSING: LCP UL94V-0 BLACK - ABOVE PCB  
LCP UL94V-0 NATURAL (WHITE) - BELOW PCB  
PIN: PHOSPHOR BRONZE

1.2 EJECT MECHANISM ASSY:  
PLASTIC GUIDE: POLYPHTHARAMID UL94V-0 BLACK  
PLASTIC PUSH-ROD BUTTON: POLYPHTHARAMID UL94V-0  
COLOR -00CH BLACK  
-000CH NATURAL

COVER PLATE, EJECT PLATE, LINK ARM,  
PUSH ROD: STAINLESS STEEL  
EMI CONTACT: PHOSPHOR BRONZE

2 FINISH (PIN)

UNDER PLATING: 0.5um MIN Ni  
CONTACT AREA: 0.1um MIN GOLD OVER  
0.5um MIN Pd-Ni  
SOLDER TAIL: 2.5um MIN Sn-Pb

③ DIM "X"

4.25±.1	3.5±.1	5.0±.1
OTHERS	36,67	1,17,34,35,51,68

4 RECOMMENDED HOLD DOWN - 2mm SCREWS (95121)  
AND NUTS (92869). RECOMMENDED SCREW TORQUE: 1.0 TO  
1.5 MAX in-lbs. (1.2-1.7 cm-kgs).

⑤ SOLDER TAIL KEY:  
R/A = RIGHT ANGLE PIN-THROUGH-HOLE  
SMT-STG = STAGGERED SURFACE MOUNT  
SMT-IL = SURFACE MOUNT IN-LINE (SINGLE ROW)

⑥ ADD "H" TO PART NUMBER FOR  
OPTIONAL HOLD DOWN (2 PER ASSEMBLY  
IN EJECT MECHANISM).



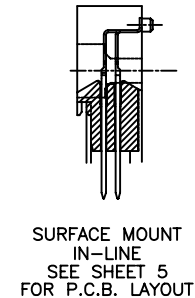
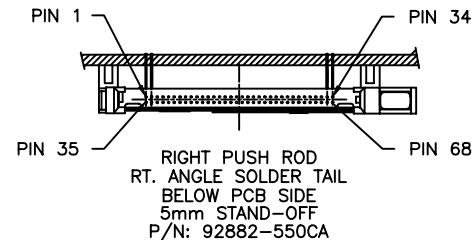
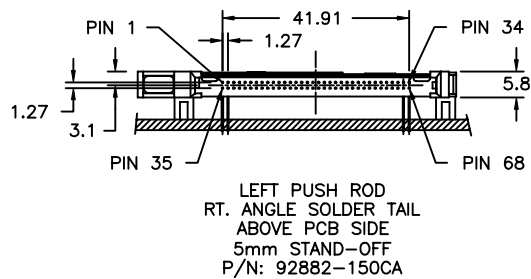
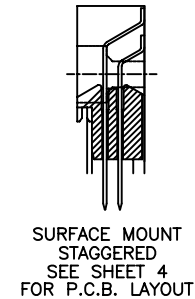
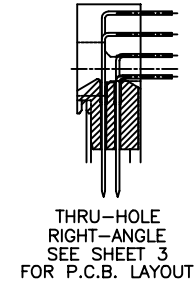
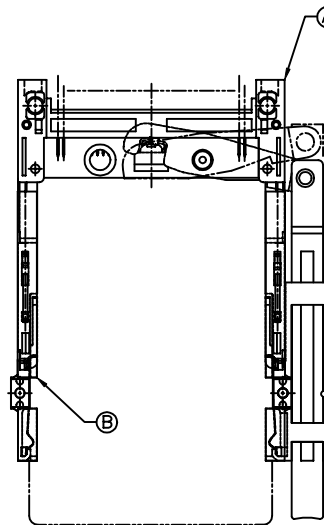
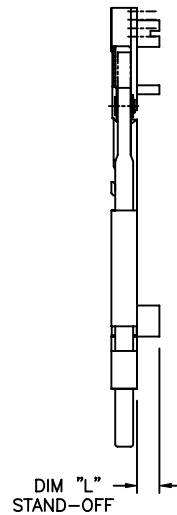
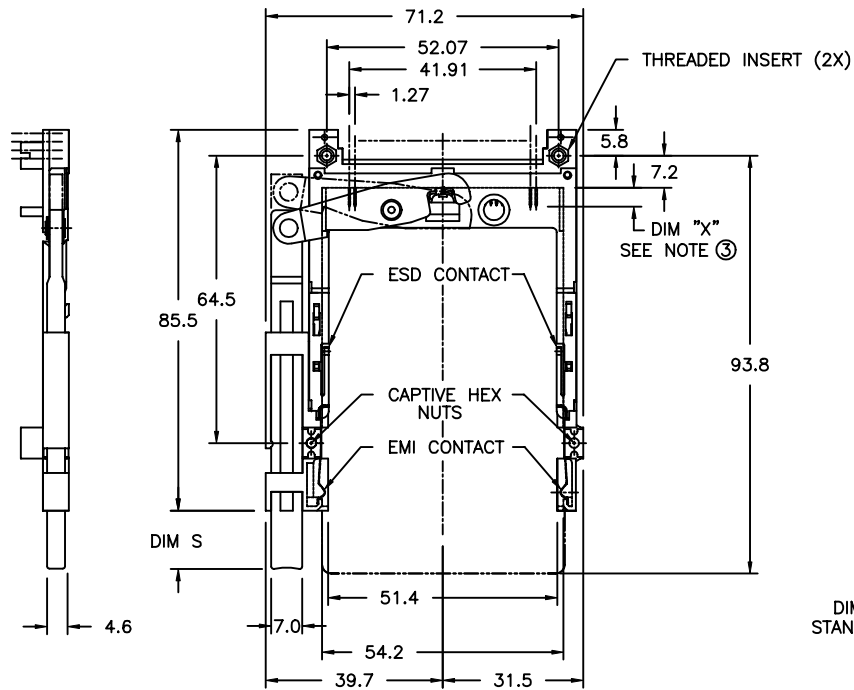
mat'l. code				tolerances unless otherwise specified				CUSTOMER COPY		Electronics FCI		
ltr	ecn no	dr	date	.X±.3				projection		title		
A	S40055	LTS	3/15/94	linear	.XX±.13				MM		EJECT HEADER ASSY WITH THREADED INSERTS	
B	V70117	RHG	2/17/97		.XXX±.051				←		product family MCS	
C	T60452	RGD	10/14/98	angles	0° ±2°				→		code	
D	T00125	RGD	4/27/00	dr	R.GRAPE	2/17/97	D.BRANN		2/17/97		size	
E	V20517	LP	3/15/02	enr	D.BRANN	2/17/97	D.BRANN		2/17/97		dwg no	
				chr	D.BRANN	2/17/97	D.BRANN		2/17/97		sheet	
				appd	D.BRANN	2/17/97	D.BRANN		2/17/97		1 of 6	
sheet index	revision sheet	E	E	E	E	E	E					
		1	2	3	4	5	6					

Tous droits strictement reserves. Reproduction ou communication a des tiers interdite sous quelque forme que ce soit sans autorisation ecrite du proprietaire. Propriete de c FCI. Droits de reproduction FCI.

All rights strictly reserved. Reproduction or issue to third parties in any form whatever is not permitted without written authority from the proprietor. Property of FCI. Copyright FCI.

Tous droits strictement reserves. Reproduction ou communication a des tiers interdite sous quelque forme que ce soit sans autorisation ecrite du proprietaire. Propriete de c FCI. Droits de reproduction FCI.

All rights strictly reserved. Reproduction or issue to third parties in any form whatever is not permitted without written authority from the proprietor. Property of FCI. Copyright FCI.



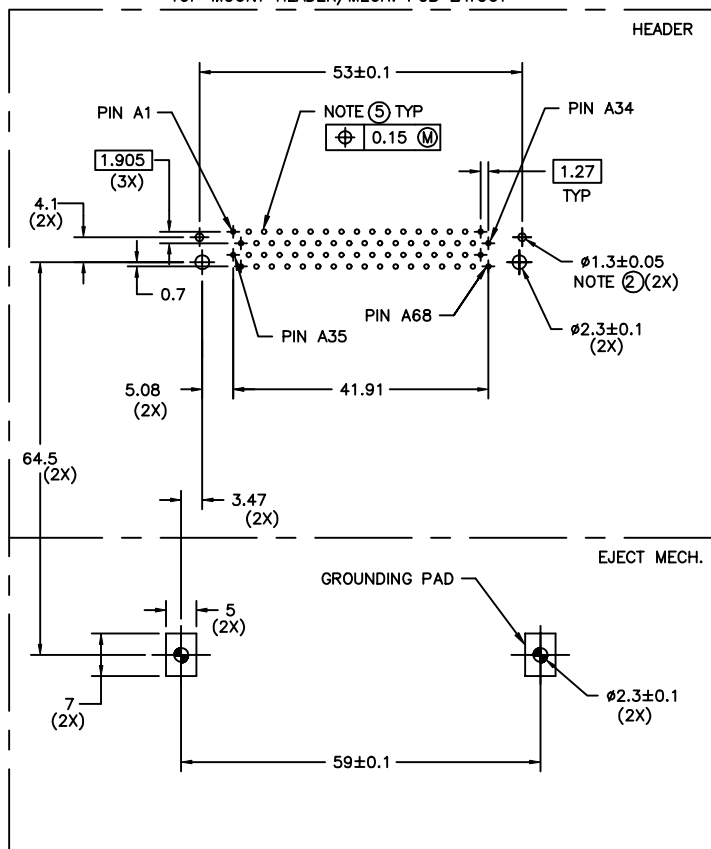
NOTES:

- REFER TO HEADER DRAWING 92856 AND EJECT MECHANISM 94307 FOR ADDITIONAL DIMENSIONS, MATERIAL, AND PLATING INFORMATION.

mat'l. code				tolerances unless otherwise specified				CUSTOMER COPY		Electronics FCI www.fciconnect.com	
ltr	ecn no	dr	date	linear	.X±.3			projection	title		
E					.XX±.13				EJECT HEADER ASSY WITH THREADED INSERTS		
					.XXX±.051				product family MCS code -		
				angles	0° ±2°			MM ← → scale 1:1	size		sheet
				dr	R.GRAPE	2/17/97	A4		92882	2 of	
				engr	D.BRANN	2/17/97					
				chr	D.BRANN	2/17/97					
				appd	D.BRANN	2/17/97					
sheet index	revision sheet										

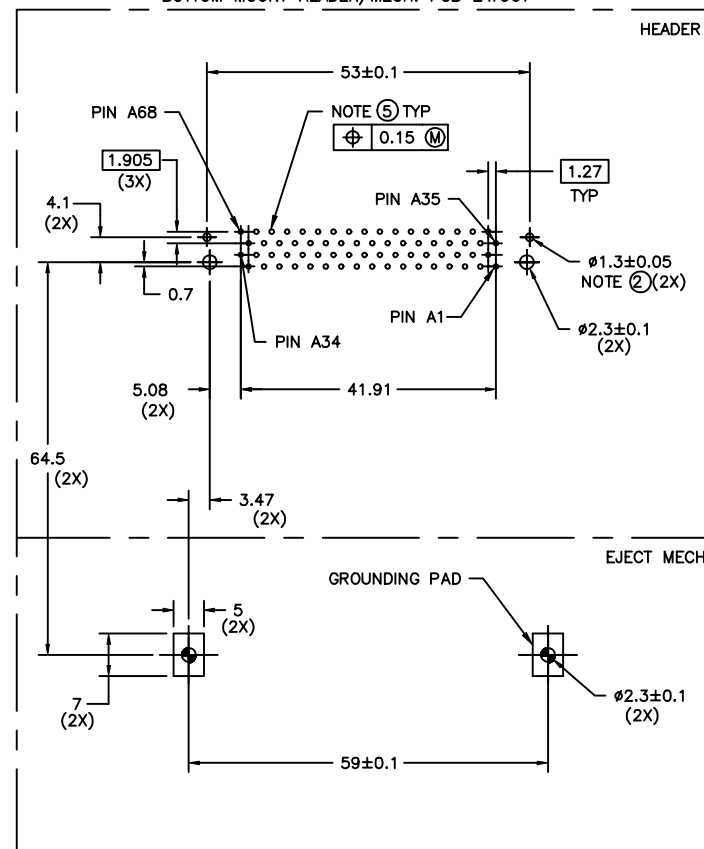
# Single Mount Right Angle

FIGURE "A"  
TOP MOUNT HEADER/MECH. PCB LAYOUT



BOARD VIEW FROM CONNECTOR MOUNTED SIDE  
TOP OF BOARD IN APPLICATION

FIGURE "B"  
BOTTOM MOUNT HEADER/MECH. PCB LAYOUT



BOARD VIEW FROM CONNECTOR MOUNTED SIDE  
BOTTOM OF BOARD IN APPLICATION

NOTES:

- 1 ALL TOLERANCES  $\pm 0.15$  UNLESS NOTED.
- 2 THIS HOLE REQUIRED FOR HEADERS WITH BOARD LOCATOR.
- 3 KEEP-OUT ZONE FOR HEADERS W\STAND-OFF OPTIONS SEE SHEET 6 FIGURE A.
- 4 KEEP-OUT ZONE FOR HEADERS W\O STAND-OFF OPTIONS SEE SHEET 6 FIGURE B.
- 5 RECOMMENDED DIAMETER IS  $\phi 1.0$ . FOR PROCESSES USING PASTE REFLOW, HOLE MAY BE AS SMALL AS  $\phi 0.79$

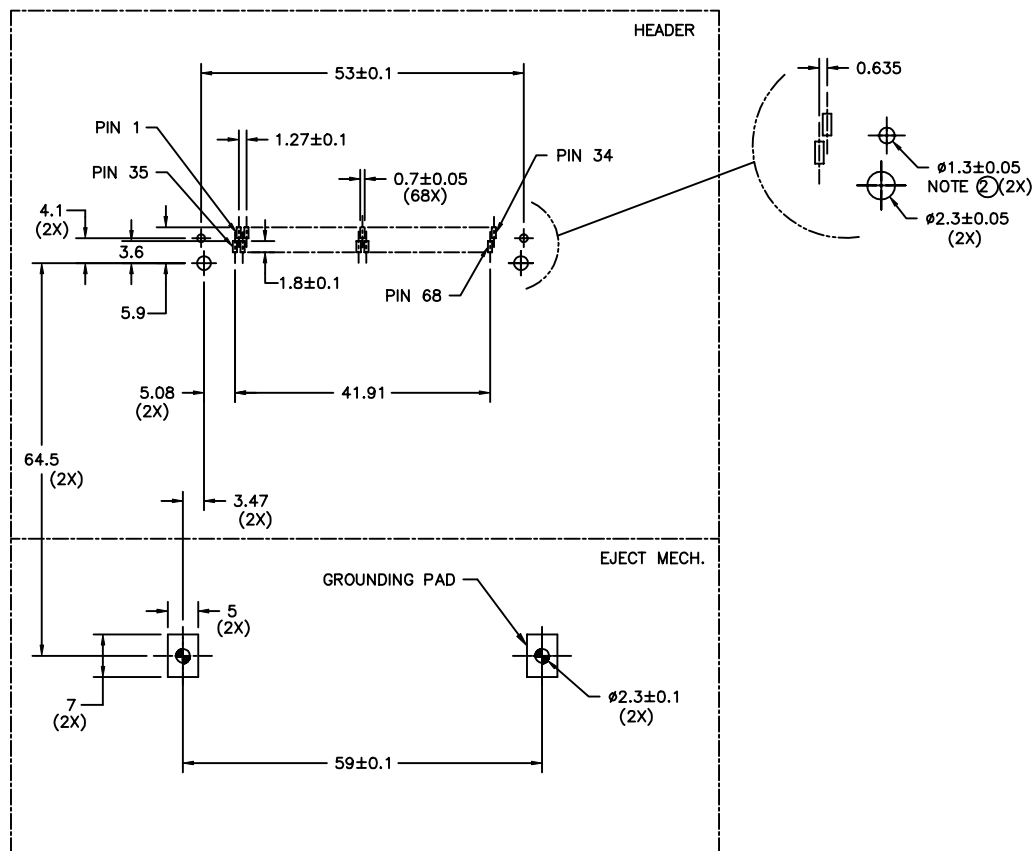
mat'l. code				tolerances unless otherwise specified				CUSTOMER COPY		 FCI <a href="http://www.fciconnect.com">www.fciconnect.com</a>		
ltr	ecn no	dr	date	linear	.XX±.3			projection	title			
E					.XX±.13				EJECT HEADER ASSY WITH THREADED INSERTS			
					.XXX±.051				product family MCS code -			
				angles	0° ±2°			 MM	size dwg no			
				dr	R.GRAPE	2/17/97	scale		A4		92882	sheet 3 of
				enr	D.BRANN	2/17/97			1:1			
				chr	D.BRANN	2/17/97						
				appd	D.BRANN	2/17/97						
sheet index	revision sheet											

Tous droits strictement reserves. Reproduction ou communication a des tiers interdite sous quelque forme que ce soit sans autorisation ecrite du propriétaire. Propriete de c FCI. Droits de reproduction FCI.

All rights strictly reserved. Reproduction or issue to third parties in any form whatever is not permitted without written authority from the proprietor. Property of FCI. Copyright FCI.

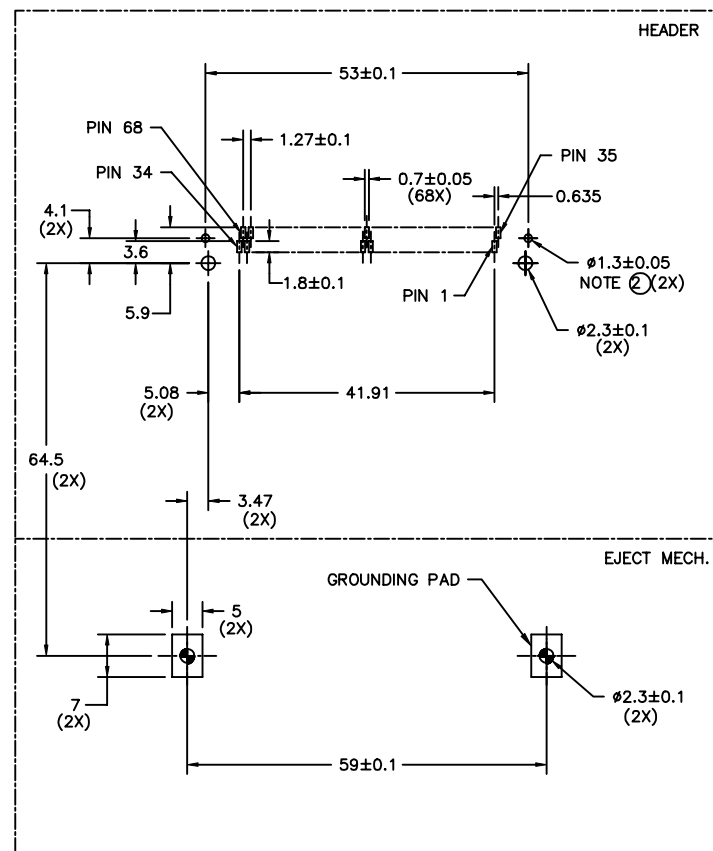
# Surface Mount Staggered

FIGURE "A"  
TOP MOUNT HEADER/MECH. PCB LAYOUT



BOARD VIEW FROM CONNECTOR MOUNTED SIDE  
TOP OF BOARD IN APPLICATION

FIGURE "B"  
BOTTOM MOUNT HEADER/MECH. PCB LAYOUT



BOARD VIEW FROM CONNECTOR MOUNTED SIDE  
BOTTOM OF BOARD IN APPLICATION

NOTES:

- 1 ALL TOLERANCES ±0.15 UNLESS NOTED.
- ② THIS HOLE REQUIRED FOR HEADERS WITH BOARD LOCATOR.
- 3 KEEP-OUT ZONE FOR HEADERS W/O STAND-OFF OPTIONS SEE SHEET 6 FIGURE B.

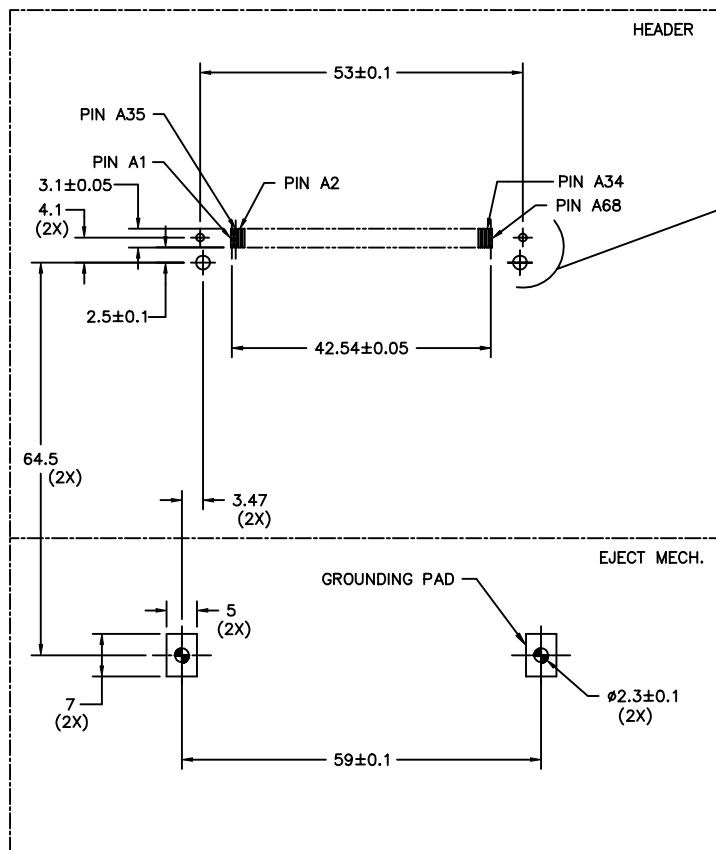
mat'l. code		tolerances unless otherwise specified		CUSTOMER COPY		 FCI <a href="http://www.fciconnect.com">www.fciconnect.com</a>	
ltr	ecn no	dr	date	linear	.X±.3	projection	title
E					.XX±.13		
				angles	.XXX±.051	MM	product family
				dr	R.GRAPE 2/17/97		scale
				enr	D.BRANN 2/17/97	1:1	
				chr	D.BRANN 2/17/97		A4
				appd	D.BRANN 2/17/97	92882	
sheet index	revision sheet						

Tous droits strictement reserves. Reproduction ou communication a des tiers interdite sous quelque forme que ce soit sans autorisation ecrite du proprietaire. Propriete de c FCI. Droits de reproduction FCI.

All rights strictly reserved. Reproduction or issue to third parties in any form whatever is not permitted without written authority from the proprietor. Property of FCI. Copyright FCI.

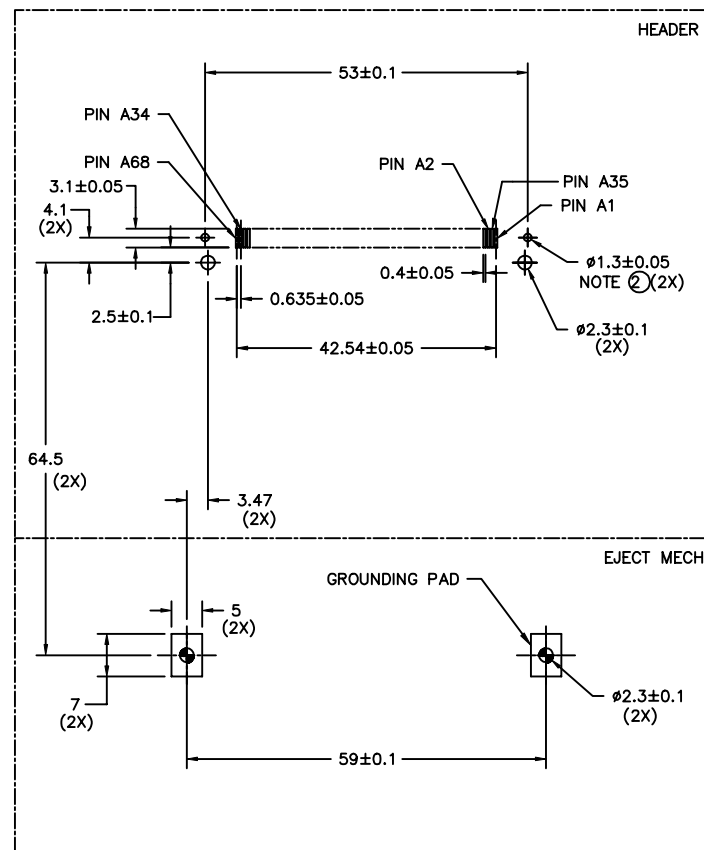
# Surface Mount In-Line

FIGURE "A"  
TOP MOUNT HEADER/MECH. PCB LAYOUT



BOARD VIEW FROM CONNECTOR MOUNTED SIDE  
TOP OF BOARD IN APPLICATION

FIGURE "B"  
BOTTOM MOUNT HEADER/MECH. PCB LAYOUT



BOARD VIEW FROM CONNECTOR MOUNTED SIDE  
BOTTOM OF BOARD IN APPLICATION

NOTES:

- 1 ALL TOLERANCES ±0.15 UNLESS NOTED.
- ② THIS HOLE REQUIRED FOR HEADERS WITH BOARD LOCATOR.
- 3 KEEP-OUT ZONE FOR HEADERS W/O STAND-OFF OPTIONS SEE SHEET 6 FIGURE B.

mat'l. code		tolerances unless otherwise specified		CUSTOMER COPY		 FCI <a href="http://www.fciconnect.com">www.fciconnect.com</a>			
ltr	ecn no	dr	date	linear	.XX±.3	projection			
E					.XX±.13				
				angles	.XXX±.051		title <b>EJECT HEADER ASSY WITH THREADED INSERTS</b>		
					0° ±2°				
		dr	R.GRAPE 2/17/97			MM	product family	MCS	code
		enr	D.BRANN 2/17/97				size	dwg no	-
		chr	D.BRANN 2/17/97			scale	A4	92882	sheet
		appd	D.BRANN 2/17/97				1:1		5 of
sheet index	revision sheet								

Tous droits strictement reserves. Reproduction ou communication a des tiers interdite sous quelque forme que ce soit sans autorisation ecrite du proprietaire. Propriete de c FCI. Droits de reproduction FCI.

All rights strictly reserved. Reproduction or issue to third parties in any form whatever is not permitted without written authority from the proprietor. Property of FCI. Copyright FCI.

# Board Keep Out Zone

FIGURE "A"  
KEEP OUT ZONE FOR STANDOFF VERSION

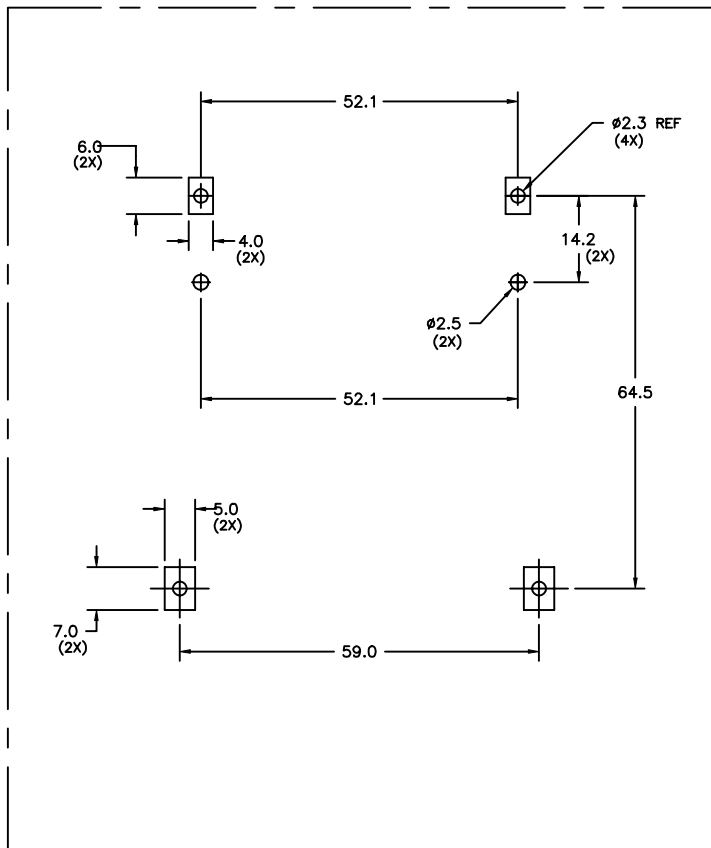
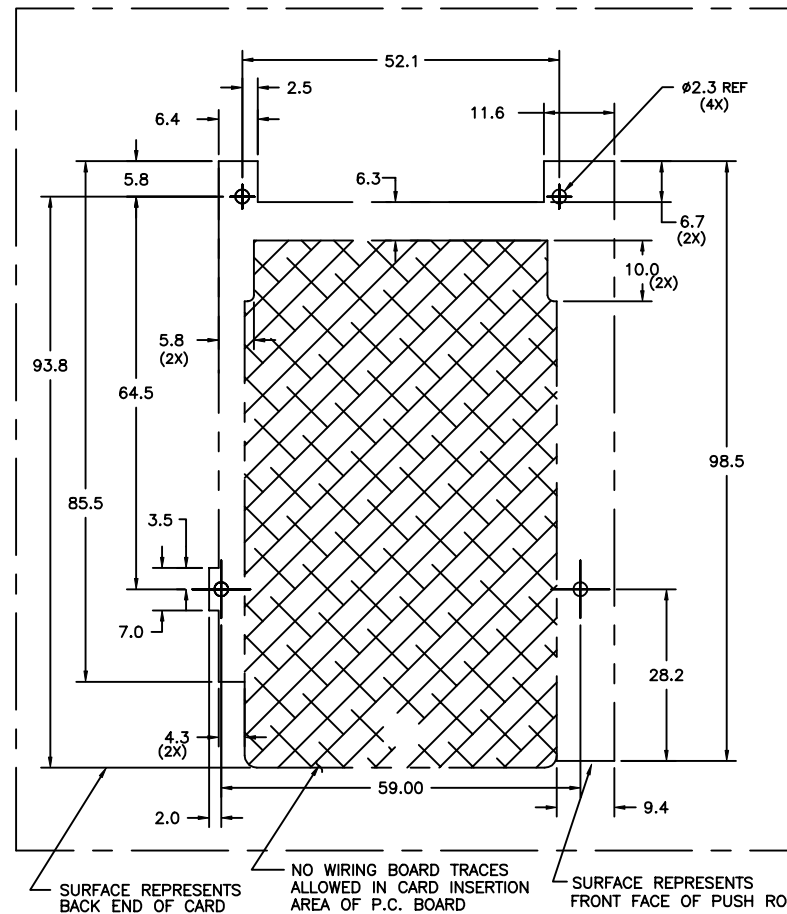


FIGURE "B" NOTE 1  
KEEP OUT ZONE FOR NO STANDOFF VERSION  
RIGHT HAND PUSHROD VERSION SHOWN  
MIRROR IMAGE FOR LEFT HAND PUSHROD



NOTES:

- ① ALL DIMENSIONS SHOWN ARE NOMINAL AND DEFINE THE OUTSIDE SURFACES OF THE MECHANISM. A MINIMUM OF 0.25mm (0.010") CLEARANCE BETWEEN THE MECHANISM AND ANY COMPONENTS IS SUGGESTED.

mat'l. code				tolerances unless otherwise specified		CUSTOMER COPY		 www.fciconnect.com	
ltr	ecn no	dr	date	linear	.X±.3		projection	title	
E					.XX±.13			EJECT HEADER ASSY WITH THREADED INSERTS	
					.XXX±.051			product family MCS code -	
				angles	0° ±2°		 MM	size dwg no	
				dr	R.GRAPE	2/17/97		A4 92882	
				enr	D.BRANN	2/17/97	sheet 6 of		
				chr	D.BRANN	2/17/97			
				appd	D.BRANN	2/17/97			
sheet index	revision sheet								

Tous droits strictement reserves. Reproduction ou communication a des tiers interdite sous quelque forme que ce soit sans autorisation ecrite du propriétaire. Propriete de c FCI. Droits de reproduction FCI.

All rights strictly reserved. Reproduction or issue to third parties in any form whatever is not permitted without written authority from the proprietor. Property of FCI. Copyright FCI.